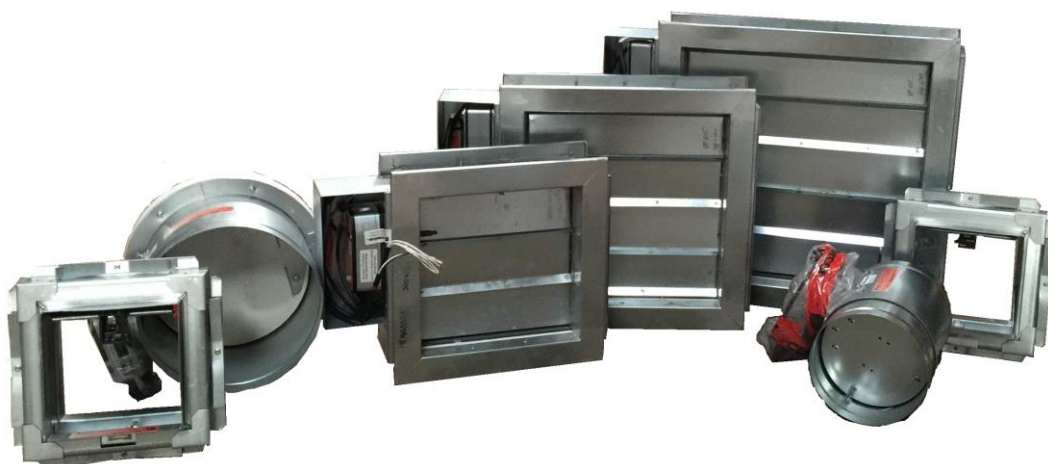


FD/FDS Fire Dampers



FD and FDS range of Fire Dampers.

The new range of fire dampers offer the highest level of quality and fire test approval with CE marking at very competitive prices.

FD Range - Resettable Heat Release Damper

The range starts with the FD resettable heat release damper with E120 and EI120 fire rated to meet the requirements of the latest UK and European standards.

With unique features like no fusible link activation that is fully resettable without the need to replace any parts. Position indicator which allows visual indication of the damper position.

2 hour fire resistance and integrity that meets the hear resistance of any fire wall and meets the EN requirements of EN standards. Also the units are fully CE marked.

FDS Range – Motorised Fire Smoke Dampers

Our latest range of Fire Smoke Dampers are designed to meet the requirements of EI and E 2 hour fire ratings with fire integrity and fire resistance with CE marking to meet the highest levels of fire heat resistance set by the European standards for dampers fitted in fire walls.

The side seals and interlocking blade design provides a high seal for smoke and air leakage to meet the most stringent requirements and standards.

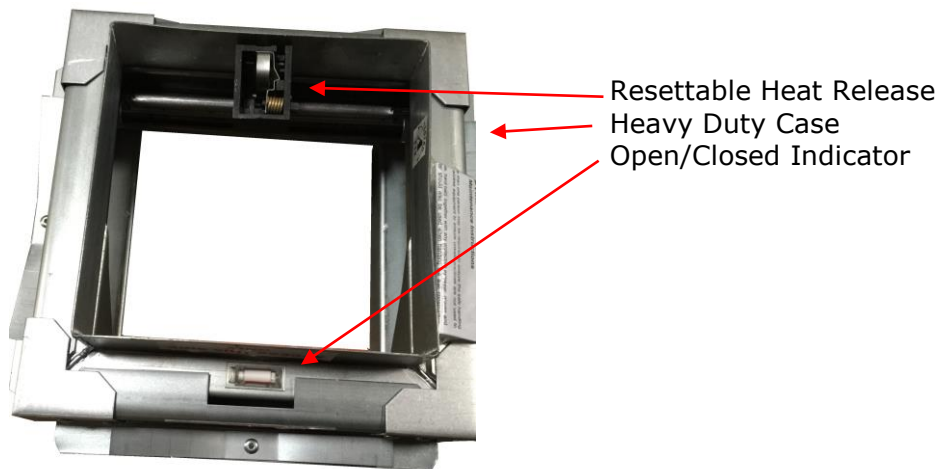
The dampers are supplied with flange fit or spigot fit bodies for ease of installation to any structure or duct type.

Single section units are available from 100sq.mm. to 1200sq.mm

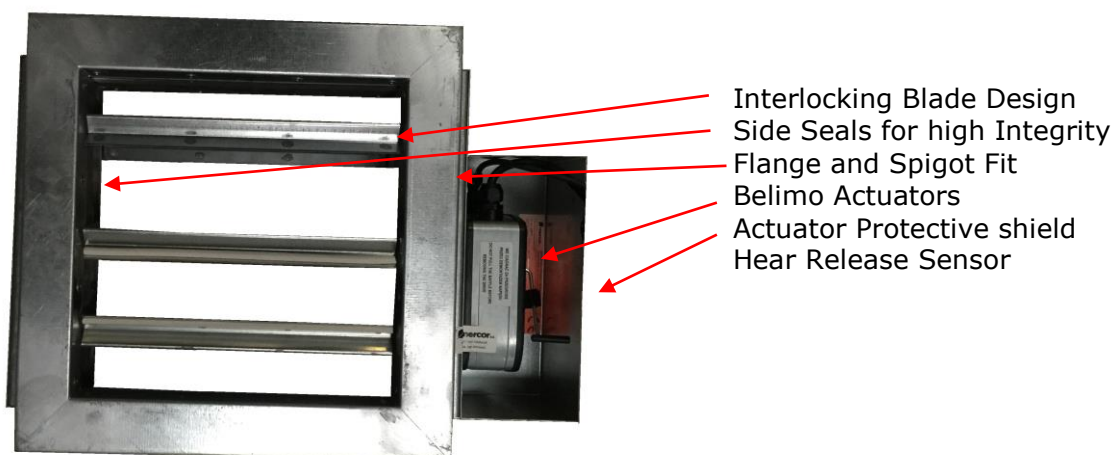
Features

- Standard blade and case construction is galvanised mild steel, with grade 302S stainless steel side seals
- Unique one piece double-skin interlocking blades
- Four casing options
- Linkage out of airflow
- Optional blades and case in grades 316 or 430 stainless steel
- Grade 316 stainless steel side seals available to order
- Infinite sizing capability from 100sq.mm. to 1200sq.mm
- Variable flange dimensions and casing widths
- CE – according to EN15650:2010

FD FIRE DAMPER RANGE



FDS FIRE SMOKE DAMPER RANGE



The New FD Range from Air Pressure Solutions Ltd